



RESIDENTIAL ESTATE AGENTS
PROPERTY LETTING & MANAGING AGENTS
VALUERS & PROPERTY CONSULTANTS
CHARTERED SURVEYORS

01722 336422
www.hwwhite.co.uk WEB



St. Ann Place,

£1,600 PCM

67 St. Ann Place, Salisbury, Wiltshire, SP1 2SU



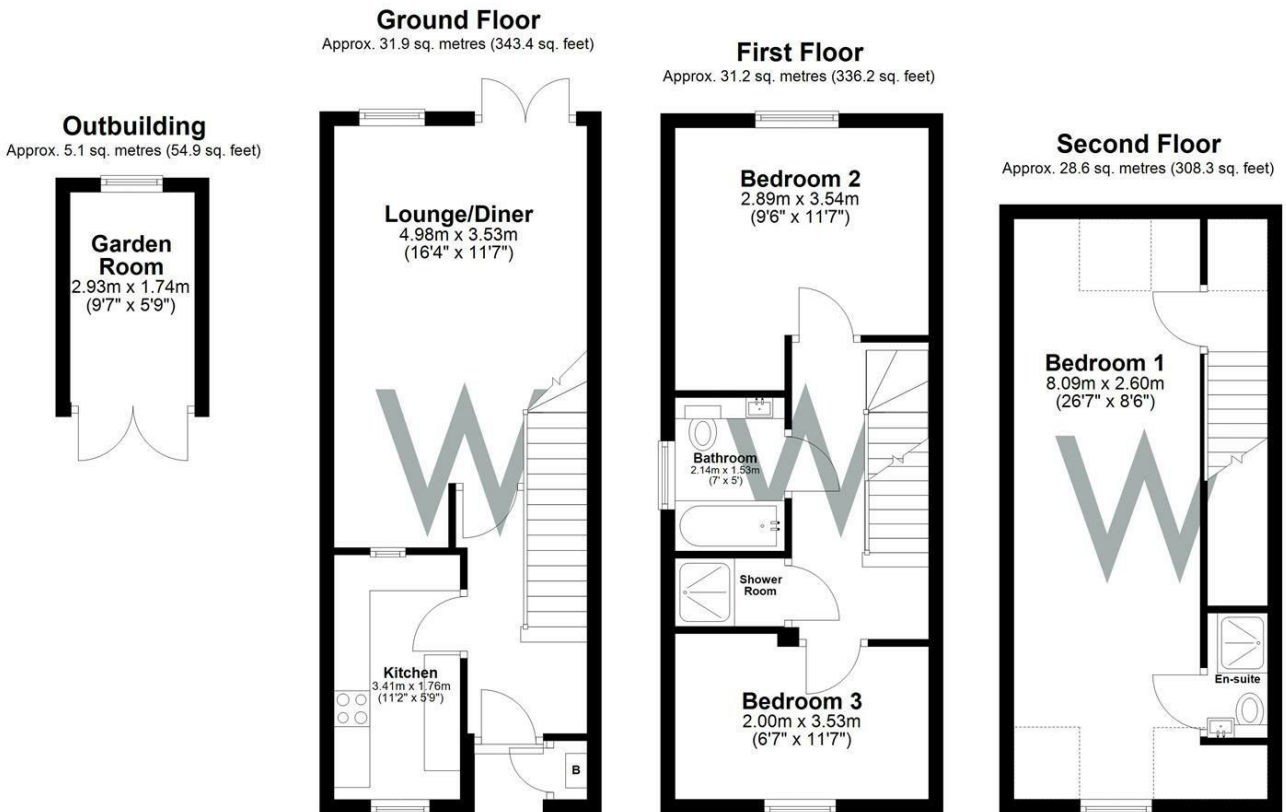
Energy Efficiency Rating		Current	Potential
Very energy efficient - lower running costs			
(92 plus) A			82
(81-91) B			
(69-80) C		69	
(55-68) D			
(39-54) E			
(21-38) F			
(1-20) G			
Not energy efficient - higher running costs			
England & Wales		EU Directive 2002/91/EC	

A newly available three-bedroom townhouse is now on the rental market situated in the centre of Salisbury. The property is built to a high specification and features a top-quality galley kitchen with Quartz worktops. Neff kitchen appliances are also included, such as an oven, gas cooktop, built-in microwave and an integral fridge freezer. Moving through from the kitchen, there is a spacious living room/dining room. The room is bright and airy, with double doors and a large window that overlooks the courtyard garden.

The upstairs accommodation is split across two floors. The first floor includes a double bedroom, a master bathroom with a bathtub and built-in mirrored cabinets. Additionally, there is a shower room with an electric shower and heated towel rail. At the front of the property on the first floor, there is a second bedroom that could easily be used as a home office.

The second floor houses the largest bedroom, which features an ensuite bathroom. Large windows on both aspects of the room create the terrace well as:

The h
UNFU



Total area: approx. 96.9 sq. metres (1042.8 sq. feet)



01722 336422

47 Castle Street, Salisbury SP1 3SP 01722 320600 FAX
residential-sales@hwwhite.co.uk E.MAIL www.hwwhite.co.uk WEB